

Yuji Takahashi
LELI-LILI (1987)
for piano

Velimir Khlebnikov: Zanguenzi Plane XV

Léli-lili

etc.

Detailed description: This block contains the first system of musical notation. It features a treble clef and a key signature of two flats (B-flat and E-flat). The melody begins with a series of eighth notes, some of which are beamed together. A fermata is placed over the first few notes. The system concludes with the word 'etc.' and a repeat sign.

chiche-chácha

Detailed description: This block contains the second system of musical notation. It continues with a treble clef and two flats. The melody is characterized by a rhythmic pattern of eighth notes, with some notes beamed together. The system ends with a double bar line and a repeat sign.

etc.

etc.

(o bo (ho) o bo o)

(o bo (ho) o ba o) sync

Detailed description: This block contains the third system of musical notation. It features a treble clef and a key signature of two flats. The notation includes a series of notes with a fermata, followed by a section of notes in parentheses. Below the staff, there are two lines of rhythmic notation: '(o bo (ho) o bo o)' and '(o bo (ho) o ba o) sync'. The system ends with a double bar line and a repeat sign.

Bieénzai

Detailed description: This block contains the fourth system of musical notation. It features a treble clef and a key signature of two flats. The melody consists of a series of eighth notes, some of which are beamed together. The system ends with a double bar line and a repeat sign.

etc.

Detailed description: This block contains the fifth system of musical notation. It features a treble clef and a key signature of two flats. The notation shows a series of notes with a fermata. The system ends with a double bar line and a repeat sign.

Zieégzoi

etc.

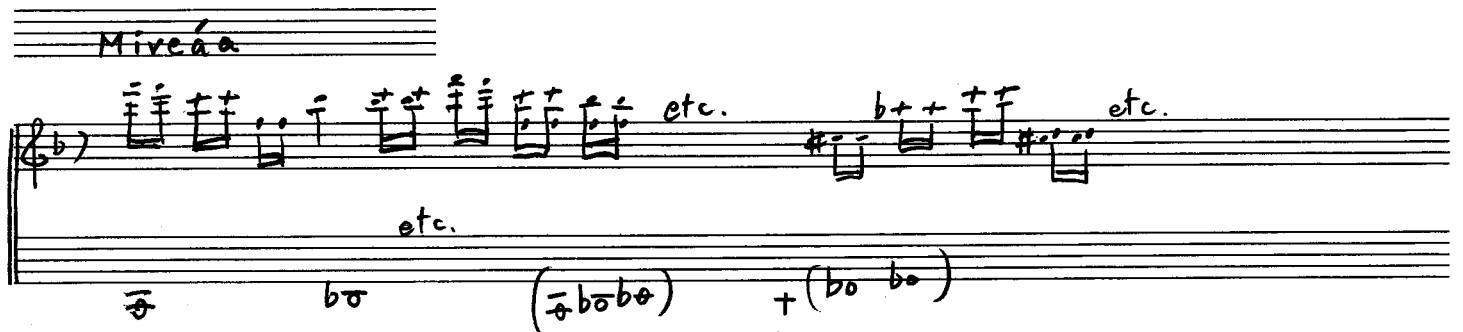
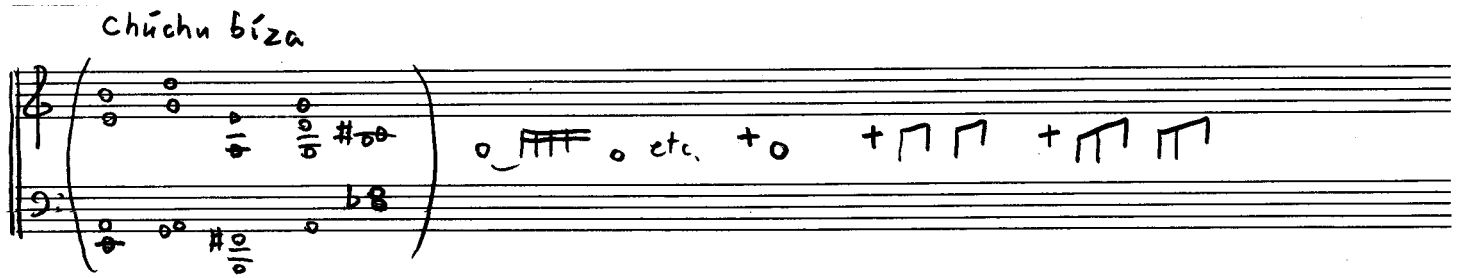
etc.

Detailed description: This block contains the sixth system of musical notation. It features a treble clef and a key signature of two flats. The melody consists of a series of notes, some with a fermata. The system ends with a double bar line and a repeat sign.

Bóbo-bíba

etc.

Detailed description: This block contains the seventh system of musical notation. It features a treble clef and a key signature of two flats. The notation shows a series of notes with a fermata. The system ends with a double bar line and a repeat sign.



Лели-лили --- снег черемух,
 Заслоняющих винтовку.
 Чичечача --- шашки блеск,
 Биээнзай --- аль знамен,
 Зиээгзой --- почерк клятви,
 Бобо-боба --- аль околыша,
 Мипиопи --- блеск очей серых войск,
 Чучу биза --- блеск божбы,
 Мивеаа --- небеса.

В. Хлебников

Leli-lili - Schnee des Vogelkirschbaums der das Gewehr verdeckt
 Tschitschetscatschah - Glanz des Säbels
 Bieenzai - Rot der Fahnen
 Zieegzoi - Schrift des Versprechens
 Bobo-biba - Rot des Bandes
 Mipiopi - Augenglanz der grauen Heere
 Tschutschu - Glanz des Schwurs
 Miweea-biza - Himmel

レリ・リリ --- ライフル銃を遮る
 実桜の雪
 チーチェチャーチャー --- 剣のきらめき
 ピエエーンザイ --- 旗の紅
 ジエエーグソイ --- 約束の印
 ボーボ・ビーバー --- 鉢巻の紅
 ミピオーピー --- 灰色の軍隊の目のかがやき
 チューチェ ピーザー --- 誓いのかがやき
 ミヴェアア --- 天

V. フレーブニコフ