

高橋悠治

Yuji Takahashi

めしは天

Rice Is Heaven

(1981)

Fl., ob., Cl.(Bb), Bsn. / Trp.(Bb), Hrn.(F) /

Perc. (chang go = Korean hourglass drum, chap lek = Thai hand cymbals) /

(6) Vn., (4) Vc.

↗, ↘ glissando (符號のみ 移動開始)

↑, ↓ 1/4 tone

*mf* slow quillism (1/4 音の中, 4/16 中, 3 弦は指の移動のみ)

~~~~~ 3 弦の vibrato. 3 弦は各自の speed. で

全曲 non vibrato espressivo.

1. pizz. は 2 弦のみ, 音程は 2 弦のみ

3 弦は 2 弦の 3 倍の長さ, 全音の長さ, 反復の speed は 4 倍  
sultato で 2 倍

♪ 2 弦の attack は 2 倍 ♪ 1 弦の attack は 2 倍

(m 112 天) 1. 系草

6/8  $\text{♩} = 92$

Ob. *p*

-Cl. (Bb) *pizz.* *mf* *pizz.*

Tr. (Cb) *mute* *p* *mf*

Vn. *f*

6/8

Ob. *ord.* *mf*

Cl. (Bb) *mf*

Hrn. (P)

Vn. *mf*

Vc. *mf*

6/8

Fl. *mf* *stacc.*

Ob. *mf*

Hrn. (F) *chng go* *f* *p* *mf* *f* *mp* *f* *mp* *f*

Vn. *pizz.* *mp* *arco* *mf* *pizz.*

Vc. *mf* *mp* *mf*

Fl. *mf*

Ob. *mf*

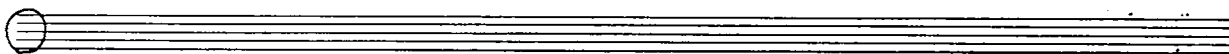
Cl. (Bb) *stacc.*

Bsn. *mf (f mp)*

Hr. (F) *mf (f mp)*

Vn. *f (f mp)*

chang 50



Fl.  $\frac{8}{8}$   $\text{♩} = 108$

Ob. *f*

Cl. (Bb) *f*

Bsn. *f*

Tp. (Bb) *f* without mute

Vn. *f*

chang 90

8

6  
8

Fl.  $\frac{6}{8}$   $\frac{4}{8}$  [21]

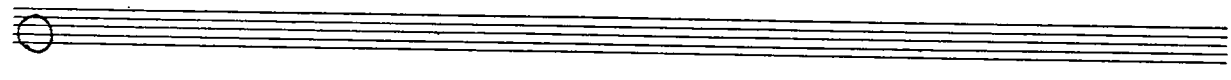
Ob.

Cl. (Bb) *f*

Tp. (Bb)

Vn. *f* *mf*

6  
8



5  
8

Fl.  $\frac{6}{8}$  [24]  $\text{♩} = 92$

Ob. *mf*

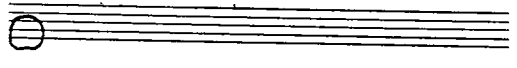
Cl. (Bb) *mf*

Hr. (F) *mp*

Vn. *mp*

5  
8

6  
8



7  
8

Hr. (F) *>*

7  
8

$\rightarrow \text{sc.}$

4  $\text{♩} = 108$  4 2 *be*

Fl. *p*

Cl. (Bb) *p*

Tp. (Bb) *mute*  
*mf slt.*

Hr. (F) *mf* *p*  
*chap lek*

Perc. *mp* *tr*

Vn. *p*

Vc. *p*

4/4 3/4 3/2

6 10

4  $\text{♩} = 108$  3 3  $\text{♩} = 88$   
4 4 2

Fl. *p*

Cl. (Bb) *p*

Tp. (Bb) *mute*  
*mf slt.*

Hr. (F) *mf* *p*  
*chap lek*

Perc. *mp* *tr*

Vn. *p*

Vc. *p*

4/4 3/4 3/2

13  $\text{♩} = 108$   $\text{♩} = 88$

Fl.  $\text{b}^{\flat}$

Cl. (Bb)

Tp. (Ab) *mute*

Hn. (F) *mf*

*chapellex* *tr*

Vn. *mba.*

Vc. *p*

16  $\text{♩} = 108$   $\text{♩} = 88$

Fl.  $\text{b}^{\flat}$

Cl. (Bb)

Tp. (Ab) *mute*

Hn. (F) *mf*

*chapellex* *tr*

Vn. *p*

Vc. *p*

4 *stacc.*  $\uparrow \uparrow$

Ob.  $\downarrow \downarrow$

Cl. (Bb)

Bsn.

Tp. (Bb) *without mute*

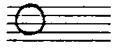
Hrn. (F)

Chang go

Vn.

4  
4

24



30

Fl.

Ob.

Cl. (Bb)

Bsn.

Tp. (Bb) *stacc.*

Hrn. (F) *stacc.*

Chang go

Vn.

Vc.

*Molto*



Handwritten musical score for the first system, measures 25-32. The score includes staves for Flute (Fl.), Oboe (Ob.), Clarinet in B-flat (Cl. (Bb)), Bassoon (Bsn.), Trumpet in B-flat (Tp. (Bb)), and Violin (Vn.).

Measures 25 and 32 are boxed. The Flute part has a fermata over measure 25. The Bassoon part has a *p* dynamic marking in measure 32. The Violin part has a *p* dynamic marking in measure 32. There are various articulation marks and slurs throughout the system.



Handwritten musical score for the second system, measures 42-46. The score includes staves for Flute (Fl.), Oboe (Ob.), Clarinet in B-flat (Cl. (Bb)), Bassoon (Bsn.), Trumpet in B-flat (Tp. (Bb)), Horn in F (Hn. (F)), and Violin (Vn.).

Measure 42 is boxed. A tempo marking of  $\text{♩} = 132$  is present above measure 46. The Clarinet part has a *f* dynamic marking in measure 46. The Horn part has a *mf* dynamic marking in measure 46. The Violin part has a *p* dynamic marking in measure 46. There are various articulation marks and slurs throughout the system.

Fl. *f*

Ob. *mf*

Cl. (Bb) *f*

Bsn. *f*

Tp. (Bb) *mf* *stacc.*

Hn. (F) *mf* *stacc.*

Vn. *f* *pizz.* *arco* *mp* *pizz.*

Vc. *f*

Fl. *f*

Ob. *f*

Cl. (Bb) *mf* *f*

Bsn. *mf* *f*

Tp. (Bb) *mf* *stacc.*

Hn. (F) *mf* *stacc.*

Vn. *mf* *pizz.* *arco* *pizz.*

Vc. *mf* *pizz.*

56

Handwritten musical score for woodwinds, brass, and strings. The score is arranged in systems. The first system includes Flute (Fl.), Oboe (ob.), Clarinet in B-flat (Cl. (Bb)), and Bassoon (Bsn.). The second system includes Trumpet in B-flat (Tp. (Bb)), Horn in F (Hn. (F)), and a string line. The third system includes Violin (Vn.) and Violoncello (Vc.). The score features various musical notations including notes, rests, dynamics (mf), and articulation (stacc.).

Fl. *mf*

ob. *mf*

Cl. (Bb) *mf*

Bsn. *mf*

Tp. (Bb) *mf* *stacc.*

Hn. (F) *mf* *stacc.*

Vn.

Vc.

12/8  $\text{♩} = 88$

C1.  $f$   $mf$

Vn.  $mf$   $mp$

FL.  $f$   $mf$  **5**

C2.  $mf$

Vn.

C1.  $mf$

Vn.  $mf$  *non stacc.*

C1.  $mf$   $f$  **11**

Vn.  $f$

C1.  $mf$   $f$  *mf*

Vn.  $f$

$\text{♩} = 132$   $\text{♩} = 88$

C1.  $mp$   $f$

Vn.  $mp$  *tr. molto*  $f$  *tr. molto*

19

$\text{♩} = 132$

FL.   
 CL. (Bb)   
 Vn.

*mp* *sul pont.*

FL.   
 CL. (Bb)   
 Vn.

*p* *mp*

FL.   
 CL. (Bb)   
 Vn.

*p* *mp*

4/4   
 4   
 $\text{♩} = 108$  [25]   
 Hn (F)   
 Vn.   
 Vc.

*mp* *ord.* *mp espr. non. vibr.*

[33]   
 Hn (F)   
 Vn.   
 Vc.

Handwritten musical score for a symphony orchestra, measures 38-43. The score includes parts for Clarinet (C1), Horn (Hn), Violin (Vn), Viola (Vc), Flute (Fl), Clarinet (Cl), Horn (Hn), Violin (Vn), and Viola (Vc). The key signature is B-flat major (two flats). The time signature is 4/4. The score is marked with dynamics such as *mp*, *mf*, *p*, and *f*. Measure numbers 38 and 43 are indicated in boxes at the top. A double bar line is present at the end of measure 43. There are some handwritten annotations, including a circled '1' and a circled '11'.

4. 天竺 12 天

12/8 ♩ = 80

3 ♩ = 100

FL.

CL. (Bb)

Tr. (Bb)

Hn. (F)

Perc.

FL.

CL. (Bb)

Tr. (Bb)

Hn. (F)

Perc.

FL.

Ob.

CL. (Bb)

Tr. (Bb)

Hn. (F)

Perc.

112

Fl. *mf*

Ob. *mf*

Bsn. *mp* *mf* *mp* *mf* *mp*

Handwritten musical notation for measures 112-115, including dynamics and articulation.

116

Fl. *mf*

Ob. *mf*

Cl. (Bb) *mp*

Bsn. *mf* *mp*

Hrn. (F) *mf* *solo*

Handwritten musical notation for measures 116-120, including dynamics and articulation.

121

Fl. *mp* *f*

Ob. *mp* *mf*

Cl. (Bb) *mp*

Bsn. *mf*

Hrn. (F) *mp* *solo* *mp* *mf* *mp*

Handwritten musical notation for measures 121-125, including dynamics and articulation.



25

Fl.

Oboe.

Cl. (Bb)

Bsn.

Hn (F)

Tr.

mf

mp

5

29 *♩. = 80*

Fl.

Cl. (Bb)

Bsn.

Hn (F)

Vn.

Vc.

mf

f

36 *♩. = 100*

Fl.

Cl. (Bb)

Bsn.

Hn (F)

Vn.

Vc.

mp

mf

41

Fl.  
Cl. (Bb)  
Bsn.  
Hn. (F)  
Vn.  
Vc.

*mf*  
*mf espr.*  
*mf*

45

Fl.  
Cl. (Bb)  
Bsn.  
Hn. (F)  
Vn.  
Vc.

*p*  
*mf*  
*p*  
*mf*  
*p*  
*mf*

*solo*

49

6 10 6 8

Fl.  
Ob.  
Tp. (Bb)  
Hn. (F)  
Perc.

*p*  
*p*  
*p*  
*p*  
*p*

*chang go*

10 6 10 6

10  
Fl.  Flute part with notes and rests.

Ob.  Oboe part with notes and rests.

ch. 90  Clarinet part with notes and rests.

10  Empty musical staff.