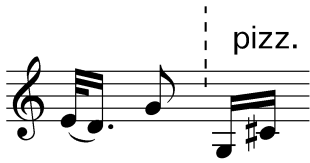
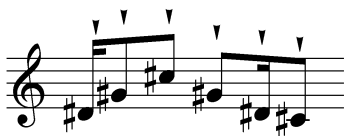
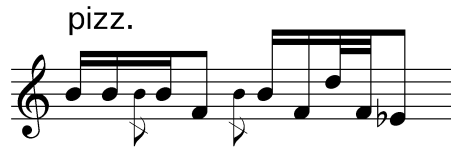
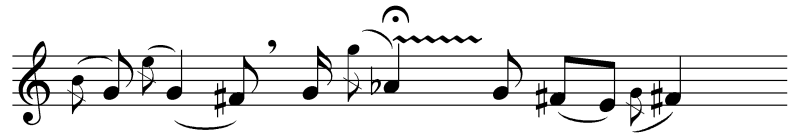


violin solo 星火 (2005)
seonhwa

高橋悠治







Musical notation for the first system, featuring a treble clef, a key signature of one flat, and a 3/4 time signature. The notation includes a melodic line with slurs and accents, and a bass line with chords. Performance markings "pizz." and "arco" are present above the staff.

Musical notation for the second system, continuing the melodic line from the first system.

Musical notation for the third system, showing a continuation of the melodic and harmonic material.

Musical notation for the fourth system, including performance markings "pizz." and "arco".

Musical notation for the fifth system, featuring a melodic line with slurs and accents.

Musical notation for the sixth system, including performance markings "pizz." and "arco".

The image displays a musical score consisting of four staves of notation. The notation is written in a single system and includes various musical symbols such as notes, rests, beams, and dynamic markings. The first staff begins with a treble clef and a key signature of one flat (B-flat). The music features a mix of eighth and sixteenth notes, often beamed together, and includes accents and slurs. The second staff contains a half note followed by a quarter rest, then a series of eighth notes with slurs. The third staff continues with eighth notes and includes a dynamic marking of mf . The fourth staff concludes with a half note and a final chord. The overall style is that of a classical or contemporary instrumental piece.

どのページのどこからでもはじめて
さまよってゆき
いつでもやりなおす

かぞえないで リズムを感じる

音それぞれにちがう彩り
弓の張りをゆるめ 速度を変えながら

朝鮮全羅南道民謡フン・タリョン（興打令）による

星火は流星または火花

start from any fragment in any page
wander around aimlessly
may start afresh anytime

not counting but feeling rhythms

see each note as a separate color
with a loose bow changing the speed

adapted from Heun Taryeong, a folksong in Chollanamdo, Korea

seong-hwa means meteoric trail or a spark