

Viola (of Dmitri Shostakovich)

after DS's Sonata for Viola and Piano (2002)

For the performance:

Yuji Takahashi

2002

Imperfect tuning

With a loose bow

Concentrate on the feel of fingers and the bow

Unintentional timbre changes may arise at every moment

Play precariously like a candle flame in the wind

Hear the sounds not as a melody but as separate colors
spreading in the acoustic space and fading variously

Play fragments in sight without premeditated order

the same fragment may be played a few times

provided that the second time is not a mere repetition but the renewal

Duration of notes are short or long without regularity

dependent on the action required to execute

the indicated pitch-timbre combinations

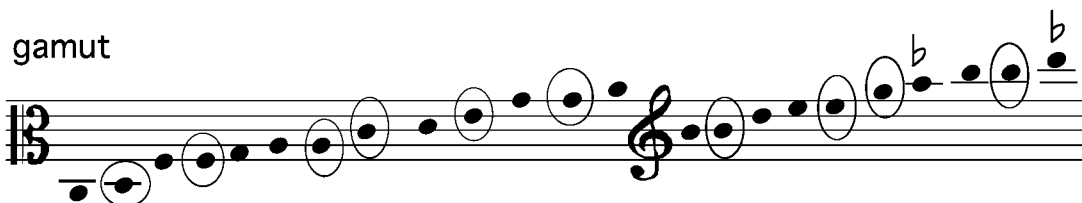
Pages are distributed in any order at several musicstands

each set apart from the others

and the performer plays wandering among them on stage

Could be performed simultaneously with

Piano 4 (An Automat in Sugunami Ward)



‡	half (i.e. incompletely) sharp	_____ (not 1/4 tone) ambiguous pitch out of tune
∫	half flat	
○	imprecisely around _____ (sharp or flat)	
↗	overslide	
↘	underslide	

roll the bow tilt the bow alternatively
 ↗↘↗↘... toward the fingerboard or the bridge

4 1 4 1 3 4



microtonal meandering
change finger and slightly shift position

A

play once through
then repeat many times
each time some notes should be replaced
so that the sequence never sounds the same
notes are short or long without regularity

The image shows a musical score on a single staff with a 3/4 time signature. The notes are: G4, A4, B4, C5, D5, E5, F5, G5. Above the staff are performance instructions: *spicc* *spicc*, *sfz*, *pz*, *sfz*, *roll the bow*, *pz*, *col legno*, *col legno*, *both unstable*, and *+*. Below the staff are various fingering and performance diagrams. These include: *spicc* IV 4, *harm*, *13 tr*, *harm*, *stable*, *unstable*, *II 4*, *vibr*, *III pz*, *roll the bow*, *sfz*, *vibr* II 4, *roll the bow*, *harm*, *pz*, *spicc* II 4, and *roll the bow*. A circled note on the right is labeled *both unstable* with a plus sign.

B1

flautando

V III
1 3

II 4
2 1

III₃ V
2 1

spicc gliss pz arco tr non vibr roll the bow col legno arco

microtonal meandering

4 1 4 1 3 4

V
3 4 3

spicc sul pont. ricochet flautando pz arco

gliss tr microtonal meandering ricochet

V non vibr

sul pont. vibr col legno spicc

V flautando gliss

V
2

pos. ord. microtonal meandering sul pont. ricochet non vibr pz microtonal meandering spicc flautando gliss ord.

B2

spicc spicc

harm

pz

pitch meandering

ricochet

microtonal meandering

2 1 2 3 2 1 4 2

spicc spicc

ricochet

pz

gliss

tr

harm

ricochet

spicc

harm

sul pont. vibr

3 (1) + 2

harm

3 2 3 2

ricochet

sul pont.

flautando

sul pont.

col legno

spicc

arco roll the bow

pz

flautando

gliss

spicc spicc

B3

roll the bow
tr
spicc
roll the bow
gliss

non vibr
col legno
sul pont.
vibr
flautando
flautando

gliss
harm
vibr
tr
tr
pizz
arco
tr
microtonal meandering

flautando
II
gliss
vibr
III

vibr
non vibr
pizz
ricochet
roll the bow
spicc

C1

flautando
modo ord.
vibr

microtonal meandering
I harm
harm vibr
pz
arco
ricochet
microtonal meandering

flautando
flautando
modo ord.
ricochet
modo ord.

flautando

ricochet
ricochet
spicc
pz

ricochet
tr

arco
col legno
arco
microtonal meandering
col legno
arco flautando

C2

gliss harm harm sul pont.
I I II

This system shows a treble clef staff with a glissando line over a series of notes. Two notes are marked with diamond symbols and labeled 'harm'. The system ends with a 'sul pont.' marking and two fingerings, 'I' and 'II', indicated below the notes.

ricochet ricochet +

This system continues the treble clef staff with two 'ricochet' markings over groups of notes. The system concludes with a '+' sign.

sul pont.

This system shows a bass clef staff with a 'sul pont.' marking at the beginning, followed by a series of notes.

col legno arco gliss vibr microtonal meandering

This system features a treble clef staff with various techniques: 'col legno' (dots above notes), 'arco' (above notes), 'gliss' (over a group of notes), 'vibr' (wavy line under notes), and 'microtonal meandering' (circled groups of notes).

col legno pz arco harm

This system shows a bass clef staff with 'col legno' (dots), 'pz' (pizzicato), and 'arco' markings. The system ends with a diamond symbol and the label 'harm'.

arco pz arco gliss harm pz arco ricochet

This system features a bass clef staff with 'arco', 'pz', 'arco', 'gliss', 'harm', 'pz', 'arco', and 'ricochet' markings. It includes a '+' sign and a series of dots at the end.

tr

This system shows a bass clef staff with two 'tr' (trills) markings over notes, followed by a diamond symbol and a series of dots.

D1

IV flautando

roll the bow

spicc

harm I II

pz

sul pont.

spicc

flautando

harm

roll the bow

ricochet

col legno

arco

harm III

sul pont.

pz

III

vibr

flautando

tr

flautando

spicc

spicc

non vibr

flautando

microtonal meandering

4 1 4 1 3 4 2

D2

II
col legno ricochet III V

vibr col legno arco roll the bow flautando modo ord.

III microtonal meandering II I harm

1 2 4 2 3 2 4 2

gliss harm ← non harm harm (imperfect non harm harmonic gliss)

roll the bow vibr non vibr tr harm

roll the bow

II

gliss tr microtonal meandering tr microtonal meandering tr gliss gliss

1 2 4 2 3 2 4 2 3

col legno arco vibr sul pont. II vibr

tr